



Order code Notes

A = Gate type for open nozzle with tip
and open nozzle with gate without tip

C = Gate type for open nozzle with gate
without tip

V = Gate bushing

L = Extended gate bushing

S = Shaft diameter of the hot runner nozzle in mm

Order code:

22 V A V 80 1.2 S

V = Wear resistance coating

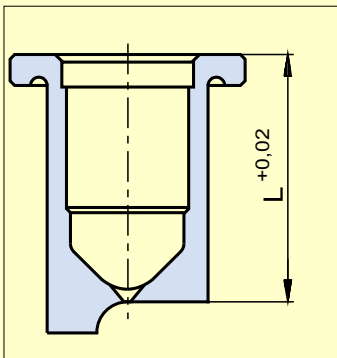
L = Standard length of the hot runner nozzle

D = Gate diameter

S = Special design

Notes

The cavity outline of the extended gate bushing must have the size of the dimension "L" at the gate. In longer hot runner nozzles the gate bushings are supported by a distance piece.



∅ D: The gate point diameter D is dependent on the material used and part weight.

Check recommended values to determine the gate diameter D online in our "Delta Tool Calculation Program" at www.guenther-hotrunner.com

L: Length L + 0.02 refers to the gate diameter.

Tolerance zone for the gate bushing in the cavity plate:

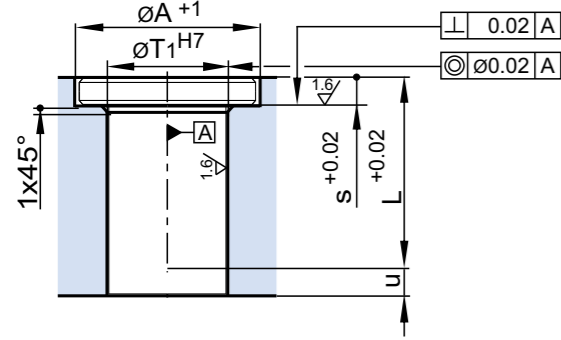
Dimensions ∅ H7	> 10...18 =	+0.018 0
	> 18...30 =	+0.021 0
	> 30...50 =	+0.025 0

If you have any questions please call our technical consulting at +49 (0) 6451 - 50 08 0.

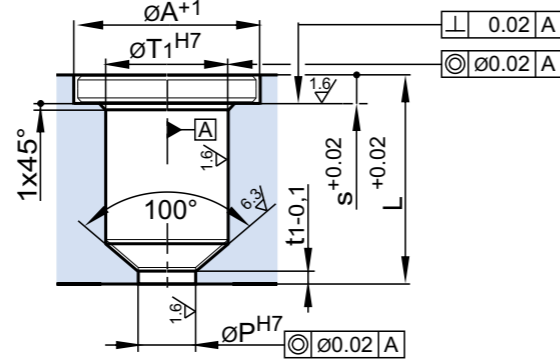
Gate bushings LA / VA



Assembly of gate bushing LA



Assembly of gate bushing VA



Order code

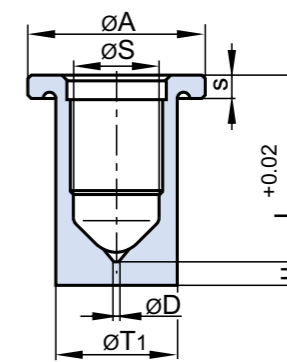
Example: Gate bushing 32LA100-1.0

- 32 = Nozzle shaft- \varnothing in mm
- LA = Extended
- 100 = Length of gate
- 1.0 = Gate point $\varnothing D$ in mm.

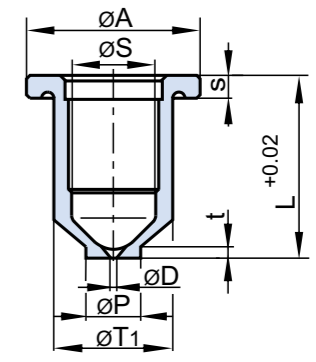
Design of gate bushing

- LA extended
 - LAV extended and wear resistant
 - VA
 - VAV wear resistant
- for open nozzle with tip / open nozzle with gate without tip suitable for gate type A and nozzle piece type C

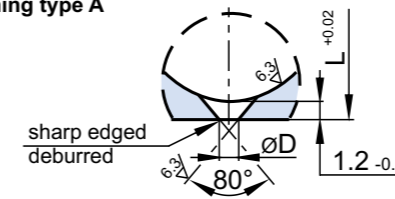
Type LA



Type VA



Gate bushing type A



Dimensions/Nozzle type/Delivery time

Description LA VA	Dimension (mm)					Gate bushing suitable for nozzle type																										
	$\varnothing A$	$\varnothing S$	$\varnothing P$	$\varnothing T_1$	s	t	t ₁	u	40		50		60		80		100		120		150		200		250		300		350		400	
15LA 15VA	35	15	12	22	5	2.5	2.3	5	NR	4STT/DTT	NR	4STT/DTT	NR	4STT/DTT	NR	4STT/DTT	NR	4STT/DTT	NR		NR		NR		NR		NR		NR		NR	
18LA 18VA	38	18	12	26	5	2.5	2.3	5		5STT/DTT	NR	5SET/DET		5STT/DTT	NR	5SET/DET		5STT/DTT	NR	5STT/DTT	•	5STT/DTT										
20LA 20VA	35	20	16	28	5	2.5	2.3	15		4SET/DET	NR	4SHT/DHT		4SET/DET	NR	4SHT/DHT		4SET/DET	NR	4SHT/DHT												
20LA 20VA										4SMT/DMT	NR	4SHT/DHT		4SMT/DMT	NR	4SHT/DHT		4SMT/DMT	NR	4SHT/DHT												
20LA 20VA										4SMT/DMT	NR	4SHT/DHT		4SMT/DMT	NR	4SHT/DHT		4SMT/DMT	NR	4SHT/DHT												
22LA 22VA	38	22	16	32	5	2.5	2.3	15		5SET/DET	NR	5SHT/DHT		5SET/DET	NR	5SHT/DHT		5SET/DET	NR	5SHT/DHT	•	5SET/DET										
22LA 22VA										5SHT/DHT	NR	5SHT/DHT		5SHT/DHT	NR	5SHT/DHT		5SHT/DHT	NR	5SHT/DHT		5SHT/DHT										
22LA 22VA										5SMT/DMT	NR	5SHT/DHT		5SMT/DMT	NR	5SHT/DHT		5SMT/DMT	NR	5SHT/DHT		5SMT/DMT										
22LA 22VA										6STT/DTT	NR	5SHT/DHT		6STT/DTT	NR	5SHT/DHT		6STT/DTT	NR	5SHT/DHT		6STT/DTT										
26LA 26VA	45	26	16	36	5	2.5	2.3	15		6SET/DET	NR	6SHT/DHT		6SET/DET	NR	6SHT/DHT		6SET/DET	NR	6SHT/DHT		6SET/DET										
26LA 26VA										6SHT/DHT	NR	6SHT/DHT		6SHT/DHT	NR	6SHT/DHT		6SHT/DHT	NR	6SHT/DHT		6SHT/DHT										
26LA 26VA										6SMT/DMT	NR	6SHT/DHT		6SMT/DMT	NR	6SHT/DHT		6SMT/DMT	NR	6SHT/DHT		6SMT/DMT										
26LA 26VA										8SMT/DMT	NR	6SHT/DHT		8SMT/DMT	NR	6SHT/DHT		8SMT/DMT	NR	6SHT/DHT		8SMT/DMT										
26LA 26VA										8STT/DTT	NR	6SHT/DHT		8STT/DTT	NR	6SHT/DHT		8STT/DTT	NR	6SHT/DHT		8STT/DTT										
32LA 32VA	50	32	20	42	9	3.5	3.3	15			NR	8SET/DET		8SET/DET	NR	8SET/DET		8SET/DET	NR	8SET/DET	•	8SET/DET										
32LA 32VA											NR	8SHT/DHT		8SHT/DHT	NR	8SHT/DHT		8SHT/DHT	NR	8SHT/DHT		8SHT/DHT										
32LA 32VA											NR	8SHT/DHT		10SMT/DMT	NR	8SHT/DHT		10SMT/DMT	NR	8SHT/DHT		10SMT/DMT										
32LA 32VA											NR	8SHT/DHT		10STT/DTT	NR	8SHT/DHT		10STT/DTT	NR	8SHT/DHT		10STT/DTT										
38LA 38VA	59	38	26	48	12	4.5	4.3	20			NR	10SET/DET		10SET/DET	NR	10SET/DET		10SET/DET	NR	10SET/DET	•	10SET/DET										
38LA 38VA											NR	10SHT/DHT		10SET/DET	NR	10SHT/DHT		10SET/DET	NR	10SHT/DHT		10SET/DET										
38LA 38VA											NR	10SHT/DHT		12SMT/DMT	NR	10SHT/DHT		12SMT/DMT	NR	10SHT/DHT		12SMT/DMT										
38LA 38VA											NR	10SHT/DHT		12STT/DTT	NR	10SHT/DHT		12STT/DTT	NR	10SHT/DHT		12STT/DTT										

Wear resistant gate bushing

Description LAV VAV	$\varnothing A$	$\varnothing S$	$\varnothing P$	$\varnothing T_1$	s	t	t ₁	u	40		50		60		80		100		120		150		200		250		300		350		400	
22LAV 22VAV	38	22	16	32	5	2.5	2.3	15			NR	5SET/DET		5SET/DET	NR	5SET/DET		5SET/DET	NR	5SET/DET	•	5SET/DET										
22LAV 22VAV											NR	5SHT/DHT		5SHT/DHT	NR	5SHT/DHT		5SHT/DHT	NR	5SHT/DHT		5SHT/DHT										
22LAV 22VAV											NR	5SMT/DMT		5SMT/DMT	NR	5SMT/DMT		5SMT/DMT	NR	5SMT/DMT		5SMT/DMT										
22LAV 22VAV											NR	6STT/DTT		6STT/DTT	NR	6STT/DTT		6STT/DTT	NR	6STT/DTT		6STT/DTT										
26LAV 26VAV	45	26	16	36	5	2.5	2.3	15			NR	6SET/DET		6SET/DET	NR	6SET/DET		6SET/DET	NR	6SET/DET	•	6SET/DET										
26LAV 26VAV											NR	6SHT/DHT		6SHT/DHT	NR	6SHT/DHT		6SHT/DHT	NR	6SHT/DHT		6SHT/DHT										
26LAV 26VAV											NR	6SMT/DMT		6SMT/DMT	NR	6SMT/DMT		6SMT/DMT	NR	6SMT/DMT		6SMT/DMT										
26LAV 26VAV											NR	6SMT/DMT		6SMT/DMT	NR	6SMT/DMT		6SMT/DMT	NR	6SMT/DMT		6SMT/DMT										
26LAV 26VAV											NR	8SMT/DMT		8SMT/DMT	NR	8SMT/DMT		8SMT/DMT	NR	8SMT/DMT		8SMT/DMT										
26LAV 26VAV											NR	8STT/DTT		8STT/DTT	NR	8STT/DTT		8STT/DTT	NR	8STT/DTT		8STT/DTT										

• = in stock, • = short delivery time, ◦ = delivery time upon request