



Order code Notes

A = Gate type for open nozzle with tip
and open nozzle with gate without tip

C = Gate type for open nozzle with gate
without tip

V = Gate bushing

L = Extended gate bushing

S = Shaft diameter of the hot runner nozzle in mm

Order code:

22 V A V 80 1.2 S

V = Wear resistance coating

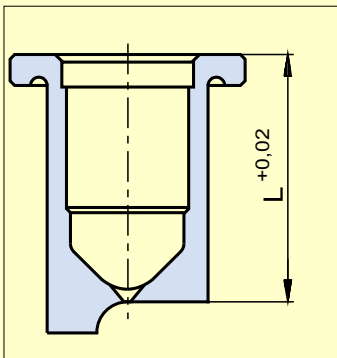
L = Standard length of the hot runner nozzle

D = Gate diameter

S = Special design

Notes

The cavity outline of the extended gate bushing must have the size of the dimension "L" at the gate. In longer hot runner nozzles the gate bushings are supported by a distance piece.



∅ D: The gate point diameter D is dependent on the material used and part weight.

Check recommended values to determine the gate diameter D online in our "Delta Tool Calculation Program" at www.guenther-hotrunner.com

L: Length L +0.02 refers to the gate diameter.

Tolerance zone for the gate bushing in the cavity plate:

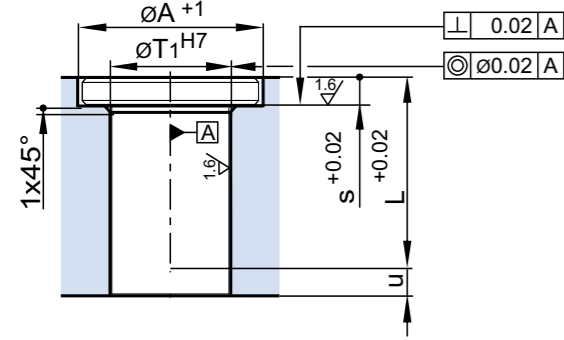
Dimensions ∅ H7	> 10...18 =	+0.018 0
	> 18...30 =	+0.021 0
	> 30...50 =	+0.025 0

If you have any questions please call our technical consulting at +49 (0) 6451 - 50 08 0.

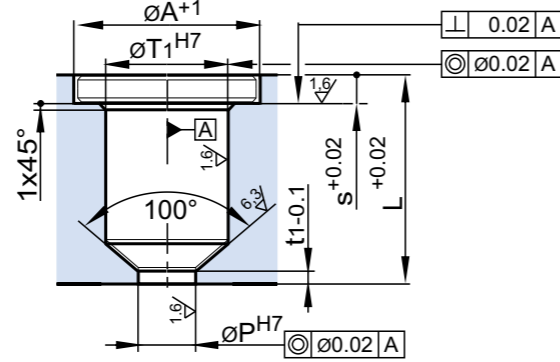
Gate bushings LC / VC



Assembly of gate bushing LC



Assembly of gate bushing VC



Order code

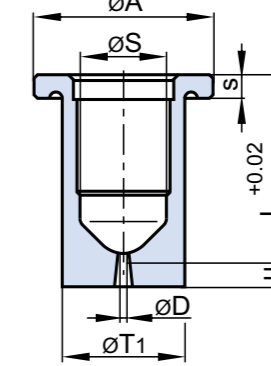
Example: Gate bushing 32LC100-1.0

- 32 = Nozzle shaft \varnothing in mm
- LC = Extended
- 100 = Length of gate
- 1.0 = Gate point $\varnothing D$ in mm

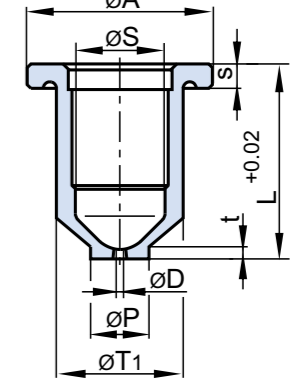
Design of gate bushing

- LC wear resistant
 - LCV extended and wear resistant
 - VC
 - VCV wear resistant
- for open nozzle with gate without tip suitable for gate type C and nozzle piece type A

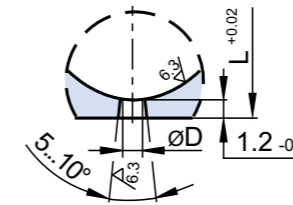
Type LC



Type VC



Gate bushing C



Dimensions/Nozzle type/Delivery time

Description LC VC	Dimensions (mm)								Length (mm)															
	$\varnothing A$	$\varnothing S$	$\varnothing P$	$\varnothing T_1$	s	t	t_1	u	Gate bushing suitable for nozzle type															
									40	50	60	80	100	120	150	200	250	300	350	400				
15LC 15VC	35	15	12	22	5	2.5	2.3	5	NR	• 4DTT	• 4DTT	• 4DTT	• 4DTT	• 4DTT										
18LC 18VC	38	18	12	26	5	2.5	2.3	5		• 5DET		• 5DET												
									• 5DTT	• 5DTT	• 5DTT	• 5DTT	• 5DTT	• 5DTT	• 5DTT									
20LC 20VC	35	20	16	28	5	2.5	2.3	15	• 4DET	• 4DET	• 4DET	• 4DET	• 4DET											
20LC 20VC									• 4DHT	• 4DHT	• 4DHT	• 4DHT	• 4DHT											
20LC 20VC									• 4DMT	• 4DMT	• 4DMT	• 4DMT	• 4DMT											
22LC 22VC	38	22	16	32	5	2.5	2.3	15	• 5DET	• 5DET	• 5DET	• 5DET	• 5DET	• 5DET										
22LC 22VC									• 5DHT	• 5DHT	• 5DHT	• 5DHT	• 5DHT	• 5DHT	• 5DHT									
22LC 22VC									• 5DMT	• 5DMT	• 5DMT	• 5DMT	• 5DMT	• 5DMT	• 5DMT									
22LC 22VC										• 6DTT	• 6DTT	• 6DTT	• 6DTT	• 6DTT	• 6DTT									
26LC 26VC	45	26	16	36	5	2.5	2.3	15	• 6DET	• 6DET	• 6DET	• 6DET	• 6DET	• 6DET										
26LC 26VC									• 6DHT	• 6DHT	• 6DHT	• 6DHT	• 6DHT	• 6DHT	• 6DHT									
26LC 26VC									• 6DMT	• 6DMT	• 6DMT	• 6DMT	• 6DMT	• 6DMT	• 6DMT									
26LC 26VC										• 8DMT	• 8DMT	• 8DMT	• 8DMT	• 8DMT	• 8DMT									
26LC 26VC										• 8DTT	• 8DTT	• 8DTT	• 8DTT	• 8DTT	• 8DTT									
32LC 32VC	50	32	20	42	9	3.5	3.3	15			• 8DET	• 8DET	• 8DET	• 8DET	• 8DET	• 8DET	• 8DET	• 8DET	• 8DET	• 8DET				
32LC 32VC											• 8DHT	• 8DHT	• 8DHT	• 8DHT	• 8DHT	• 8DHT	• 8DHT	• 8DHT	• 8DHT	• 8DHT	• 8DHT			
32LC 32VC											• 10DMT	• 10DMT	• 10DMT	• 10DMT	• 10DMT	• 10DMT	• 10DMT	• 10DMT	• 10DMT	• 10DMT	• 10DMT			
32LC 32VC											• 10DTT	• 10DTT	• 10DTT	• 10DTT	• 10DTT	• 10DTT	• 10DTT	• 10DTT	• 10DTT	• 10DTT	• 10DTT			
38LC 38VC	59	38	26	48	12	4.5	4.3	20			• 10DET	• 10DET	• 10DET	• 10DET	• 10DET	• 10DET	• 10DET	• 10DET	• 10DET	• 10DET	• 10DET			
38LC 38VC											• 10DHT	• 10DHT	• 10DHT	• 10DHT	• 10DHT	• 10DHT	• 10DHT	• 10DHT	• 10DHT	• 10DHT	• 10DHT			
38LC 38VC											• 12DMT	• 12DMT	• 12DMT	• 12DMT	• 12DMT	• 12DMT	• 12DMT	• 12DMT	• 12DMT	• 12DMT	• 12DMT			
38LC 38VC											• 12DTT	• 12DTT	• 12DTT	• 12DTT	• 12DTT	• 12DTT	• 12DTT	• 12DTT	• 12DTT	• 12DTT	• 12DTT			

Wear resistant gate bushing

Description LCV VCV	$\varnothing A$	$\varnothing S$	$\varnothing P$	$\varnothing T_1$	s	t	t_1	u	40	50	60	80	100	120	150	200	250	300	350	400
22LCV 22VCV	38	22	16	32	5	2.5	2.3	15		• 5DET	• 5DET	• 5DET	• 5DET	• 5DET	• 5DET					
22LCV 22VCV										• 5DHT	• 5DHT	• 5DHT	• 5DHT	• 5DHT	• 5DHT					
22LCV 22VCV										• 5DMT	• 5DMT	• 5DMT	• 5DMT	• 5DMT	• 5DMT					
22LCV 22VCV										• 6DTT	• 6DTT	• 6DTT	• 6DTT	• 6DTT	• 6DTT					
26LCV 26VCV	45	26	16	36	5	2.5	2.3	15		• 6DET	• 6DET	• 6DET	• 6DET	• 6DET	• 6DET					
26LCV 26VCV										• 6DHT	• 6DHT	• 6DHT	• 6DHT	• 6DHT	• 6DHT					
26LCV 26VCV										• 6DMT	• 6DMT	• 6DMT	• 6DMT	• 6DMT	• 6DMT					
26LCV 26VCV										• 8DMT	• 8DMT	• 8DMT	• 8DMT	• 8DMT	• 8DMT					
26LCV 26VCV										• 8DTT	• 8DTT	• 8DTT	• 8DTT	• 8DTT	• 8DTT					

• = in stock, •• = short delivery time, ◦ = delivery time upon request